

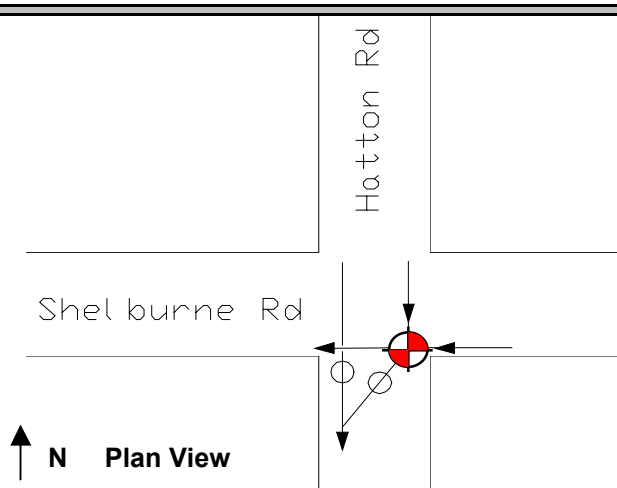
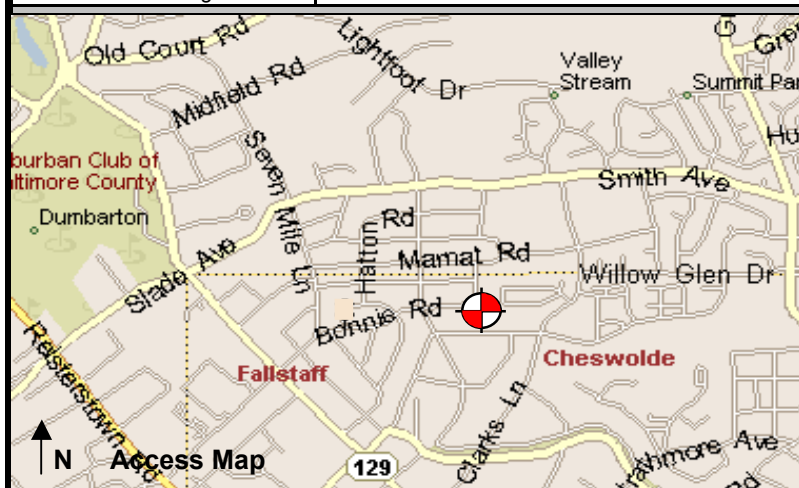
Baltimore SSO

Site Investigation Report

FM Initials: DF

Project: Upper Jones Falls Collection Sys

Site Name:	03_20S	Monitor Series:	4000	Monitor S/N:	1203	Manhole #:	N/A	Investigation Information: Upstream Input: (L/S, P/S) N/A Upstream Manhole: N/A Downstream Manhole: N/A Depth of Flow: 3.25" Description of Site Hydraulics:
Address / Location:	3229 Shelburne Rd	Map Page #:	1	Map Grid #:	4 II ₂			
		Pipe Height:	8"	Pipe Width:	8"			
		IP Address:	166.143.019.004					
Access:	Drive	GPS Coords:	N DD.dddd 39 22.300	W DD.dddd 76 42.170				
Date/Time of Investigation:	4/23/2003 11:10							


Manhole Information:

Manhole Depth: 7'4"

Manhole Material / Condition:
Brick / Fair

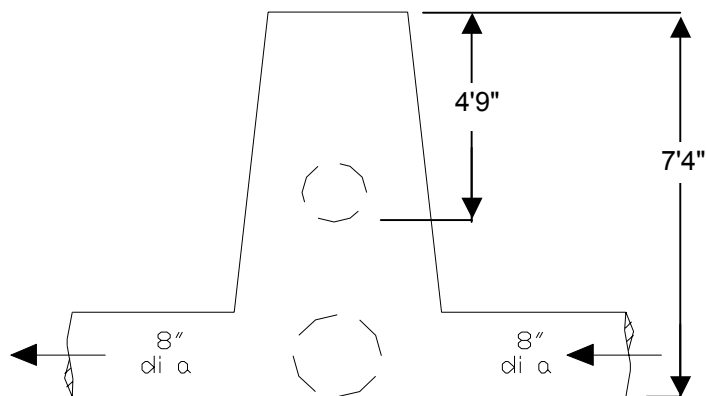
Active Drop Connections?
No

System Character:
☒ Residential
☐ Commercial
☐ Industrial

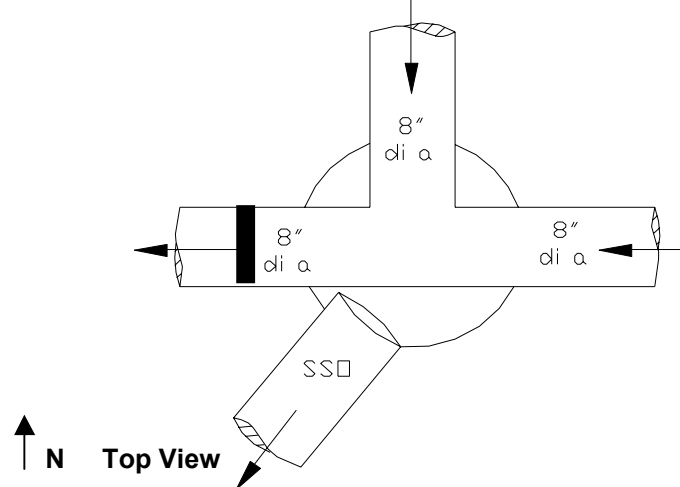
Notes:
Legend:
 Cast Iron Flap Valve

 Sensor Location

N.T.S.- Not to scale



Elevation



N Top View

The monitoring period ended as of September 30, 2005.